

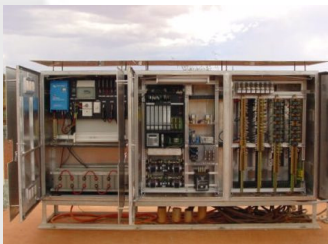
PROJECT PROFILE

<i>Name:</i>	BHP RAPID GROWTH PROJECT 3 RAIL SIGNALLING UPGRADE AND EXPANSION
<i>Owner:</i>	BHP Billiton Iron Ore
<i>Client:</i>	Mine and Ports Development Joint Venture (MPD JV)
<i>Project Description:</i>	Installation, testing and commissioning of railway signalling
<i>Site Location:</i>	North West, Western Australia
<i>Year Completed:</i>	2007



The scope of the works included:

- Installation, testing and commissioning of a new rail passing loop at Marillana
- Installation, testing and commissioning of 3 new railway passing loop extensions at Hesta, Weeli and Poonda
- Installation, testing and commissioning of alterations to railway signalling at Mining Area C
- Provision of after hour call out technicians in the event of any failure involved with the altered signalling systems
- Ongoing maintenance of the newly installed signalling equipment prior to handover



All works were undertaken in a fully operational heavy haul railway environment, which required extensive planning and interfacing with the operational group of BHP Billiton Iron Ore.

Key Project Personnel:

David Hargreaves – Project Manager
 John Cole – Tester in Charge / Off-site Construction Manager
 Nguyen Khuu – Testing and Commissioning Engineer

Special Project Achievements

Project completed on time and within budget. HSEC close out audit at 98%.

Quality Standards Applicable

Project Specific Quality Plan

Specific OH & S Requirements

Project Specific Safety Plan

- Work was undertaken in a particularly difficult physical environment.